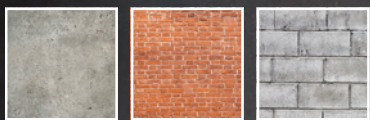


STRONG-POINT Strongcon®

STRONG-POINT®

Attach wood or metal to concrete, brick or cement block with confidence, using our **Professional-Grade Strongcon** screws.

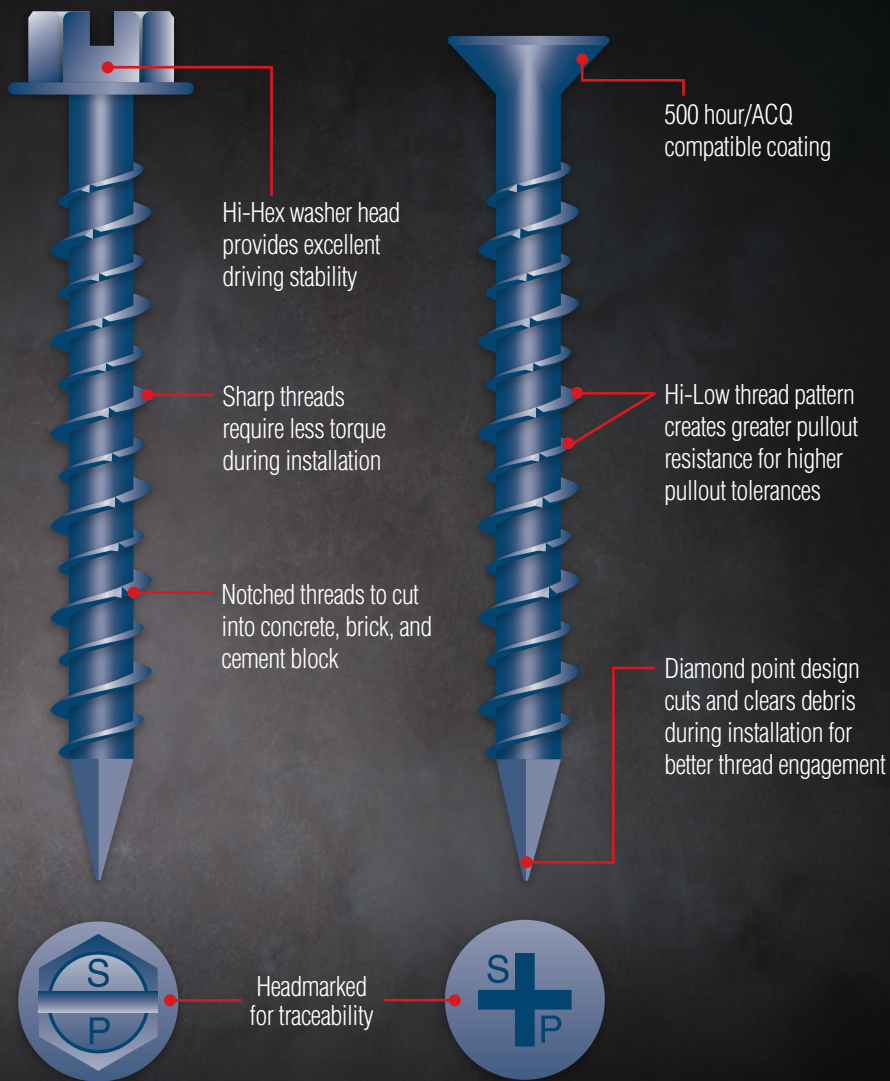


NEW LONGER LENGTHS NOW AVAILABLE

1/4 x 5" and 1/4 x 6" both in HEX WASHER HEAD & FLAT HEAD

AVAILABLE IN BULK or PACKAGED QUANTITIES

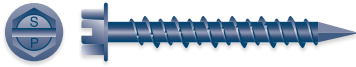
Nationally Recognized Approval Rating



INTERCORP www.intercorpusa.com

Los Angeles | New York | Chicago | Dallas | Atlanta | Portland | Houston | Cleveland | Miami
800.762.2004 | 888.322.2262 | 800.533.9669 | 800.558.7222 | 800.822.9690 | 800.434.5606 | 800.558.7222 | 800.533.9669 | 800.822.9690

Slotted Indented Hex Washer Head, Hi-Low, Notched Threads, Diamond Point, Blue Ceramic Coating



- Meets ASTM A 510 for carbon steel manufacturing
- Exceeds 500/hrs. salt spray resistance
- ACQ Compatible



Material Application
Attaches wood or metal to concrete, brick, cement block or masonry.

- Notched threads for cutting into concrete, brick and cement block
- Miami-Dade County Product Control Approved. NOA-15-0930.14

Size	Bulk Part No	Bulk Qty	Lbs*	Head Size	Fixture Thickness	Fixture Recommended Drill Bit	Packaged Part No	Qty**
3/16 x 1-1/4	CH320	5M	41	1/4" A.F.	0 - 1/4"	5/32 x 3-1/2"	PCH320	500
3/16 x 1-3/4	CH328	3M	32	1/4" A.F.	1/4" - 3/4"	5/32 x 3-1/2"	PCH328	500
3/16 x 2-1/4	CH336	2.5M	32	1/4" A.F.	3/4" - 1-1/4"	5/32 x 4-1/2"	PCH336	500
3/16 x 2-3/4	CH344	2M	32	1/4" A.F.	1-1/4" - 1-3/4"	5/32 x 4-1/2"	PCH344	500
3/16 x 3-1/4	CH352	1.5M	28	1/4" A.F.	1-3/4" - 2-1/4"	5/32 x 5-1/2"	PCH352	500
3/16 x 3-3/4	CH360	1M	21	1/4" A.F.	2-1/4" - 2-3/4"	5/32 x 5-1/2"	PCH360	500
3/16 x 4	CH364	1M	23	1/4" A.F.	2-1/2" - 3"	5/32 x 5-1/2"	PCH364	500
1/4 x 1-1/4	CH420	3M	36	5/16" A.F.	0 - 1/4"	3/16 x 3-1/2"	PCH420	500
1/4 x 1-3/4	CH428	2M	33	5/16" A.F.	1/4" - 3/4"	3/16 x 3-1/2"	PCH428	500
1/4 x 2-1/4	CH436	1.5M	30	5/16" A.F.	3/4" - 1-1/4"	3/16 x 4-1/2"	PCH436	500
1/4 x 2-3/4	CH444	1M	25	5/16" A.F.	1-1/4" - 1-3/4"	3/16 x 4-1/2"	PCH444	500
1/4 x 3-1/4	CH452	1M	29	5/16" A.F.	1-3/4" - 2-1/4"	3/16 x 5-1/2"	PCH452	500
1/4 x 3-3/4	CH460	.5M	17	5/16" A.F.	2-1/4" - 2-3/4"	3/16 x 5-1/2"	PCH460	500
1/4 x 4	CH464	.5M	18	5/16" A.F.	2-1/2" - 3"	3/16 x 5-1/2"	PCH464	500
1/4 x 5	NEW! CH480	.5M	22	5/16" A.F.	3-1/4" - 4"	3/16 x 6-1/2"	N/A	N/A
1/4 x 6	NEW! CH496	.5M	26	5/16" A.F.	4-1/4" - 5"	3/16 x 7-1/2"	N/A	N/A

**5 boxes packaged 100 per box. One drill bit included per box.

Phillips Flat Head, Hi-Low, Notched Threads, Diamond Point, Blue Ceramic Coating



- Meets ASTM A 510 for carbon steel manufacturing
- Exceeds 500/hrs. salt spray resistance
- ACQ Compatible



Material Application
Attaches wood or metal to concrete, brick, cement block or masonry.

- Notched threads for cutting into concrete, brick and cement block
- Miami-Dade County Product Control Approved. NOA-15-0930.14

Size	Bulk Part No	Bulk Qty	Lbs*	Head Size	Fixture Thickness	Fixture Recommended Drill Bit	Packaged Part No	Qty**
3/16 x 1-1/4	CF320	5M	35	1/4" A.F.	0 - 1/4"	5/32 x 3-1/2"	PCF320	500
3/16 x 1-3/4	CF328	4M	39	1/4" A.F.	1/4" - 3/4"	5/32 x 3-1/2"	PCF328	500
3/16 x 2-1/4	CF336	2.5M	31	1/4" A.F.	3/4" - 1-1/4"	5/32 x 4-1/2"	PCF336	500
3/16 x 2-3/4	CF344	2M	29	1/4" A.F.	1-1/4" - 1-3/4"	5/32 x 4-1/2"	PCF344	500
3/16 x 3-1/4	CF352	1.5M	26	1/4" A.F.	1-3/4" - 2-1/4"	5/32 x 5-1/2"	PCF352	500
3/16 x 3-3/4	CF360	1M	20	1/4" A.F.	2-1/4" - 2-3/4"	5/32 x 5-1/2"	PCF360	500
3/16 x 4	CF364	1M	22	1/4" A.F.	2-1/2" - 3"	5/32 x 5-1/2"	PCF364	500
1/4 x 1-1/4	CF420	3M	37	5/16" A.F.	0 - 1/4"	3/16 x 3-1/2"	PCF420	500
1/4 x 1-3/4	CF428	2M	33	5/16" A.F.	1/4" - 3/4"	3/16 x 3-1/2"	PCF428	500
1/4 x 2-1/4	CF436	1.5M	31	5/16" A.F.	3/4" - 1-1/4"	3/16 x 4-1/2"	PCF436	500
1/4 x 2-3/4	CF444	1M	25	5/16" A.F.	1-1/4" - 1-3/4"	3/16 x 4-1/2"	PCF444	500
1/4 x 3-1/4	CF452	1M	28	5/16" A.F.	1-3/4" - 2-1/4"	3/16 x 5-1/2"	PCF452	500
1/4 x 3-3/4	CF460	.5M	17	5/16" A.F.	2-1/4" - 2-3/4"	3/16 x 5-1/2"	PCF460	500
1/4 x 4	CF464	.5M	18	5/16" A.F.	2-1/2" - 3"	3/16 x 5-1/2"	PCF464	500
1/4 x 5	NEW! CF480	.5M	22	5/16" A.F.	3-1/4" - 4"	3/16 x 6-1/2"	N/A	N/A
1/4 x 6	NEW! CF496	.5M	26	5/16" A.F.	4-1/4" - 5"	3/16 x 7-1/2"	N/A	N/A

**5 boxes packaged 100 per box. One drill bit included per box.

Carbide Masonry Drill Bit



Size	Part No	Qty
5/32 x 3-1/2	MB531	25
5/32 x 4-1/2	MB541	25
5/32 x 5-1/2	MB551	25
3/16 x 3-1/2	MB331	25
3/16 x 4-1/2	MB341	25
3/16 x 5-1/2	NEW! MB351	25
3/16 x 6-1/2	NEW! MB361	25

